



# OMNIGRIP E-3/L-3

## DATASHEET

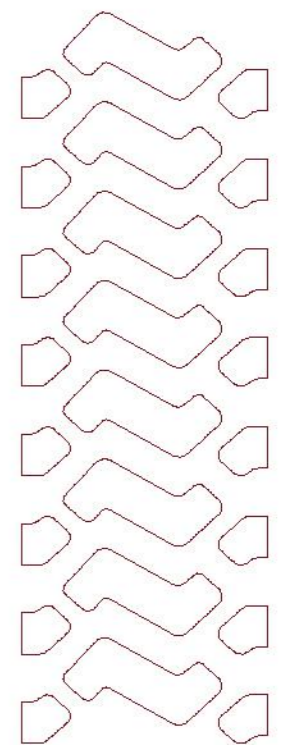


# OMNIGRIP E-3/L-3

## DATASHEET



15.5R25  
to 29.5R25  
range



### Dynamaxx

Vienna House, International Square  
Birmingham International Park  
Bickenhill Lane  
Solihull B37 7GN  
United Kingdom



# OMNIGRIP E-3/L-3

## DATASHEET



E3/L3 tyre, suitable for earth moving and construction vehicles. Optimized “siped” block pattern for puncture resistance and cooler running.

- **Wear & cut resistant tread compound**
- **Self Cleaning Tread**
- **Excellent Traction & Floatation**
- **Suitable for Loaders and Articulated Dumpers**
- **Reduced Vibration & Increased Stability**

### OMNIGRIP range

Size	Load Index & Speed Symbol	Star Rating	Type	Rim	Unit	Tire Dimensions		
						Tread Depth	Section Width	Overall Diameter
15.5R25	160B / 176A2	**	TL	12.00/1.3	in.	30/32	15.2	49.9
					mm	24	385	1268
17.5R25	167B /182A2	**	TL	14.00/1.5	in.	32/32	17.2	52.7
					mm	25.5	436	1339
20.5R25	177B / 193A2	**	TL	17.00/2.0	in.	36/32	20.6	58.4
					mm	28.5	522	1484
23.5R25	185B / 201A2	**	TL	19.50/2.5	in.	40/32	23.7	63.2
					mm	31.5	601	1605
26.5R25	193B / 209A2	**	TL	22.00/3.0	in.	44/32	26.1	68.1
					mm	35	662	1730
29.5R25	200B / 216A2	**	TL	25.00/3.5	in.	48/32	29.1	73.5
					mm	38	739	1867

notes

---



---



---



---



---



---



---