



HSS ROAD

DATASHEET

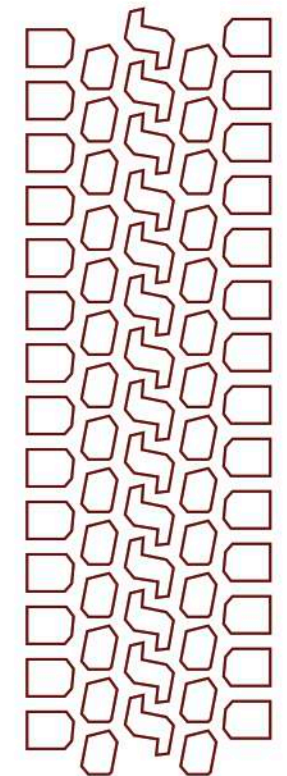


HSS ROAD

DATASHEET



14.00R24
to **20.5R25**
range



Dynamaxx

Vienna House, International Square
Birmingham International Park
Bickenhill Lane
Solihull B37 7GN
United Kingdom



HSS ROAD

DATASHEET



Highway Service

The aggressive, self-cleaning tread design provides excellent traction in tough, demanding applications.

- **Reduced wheel spin & improved traction**
- **Excellent resistance to cuts and damage**
- **Suitable for On & Off Road use**
- **Improved operator comfort**
- **Self-cleaning tread**
- **Low road noise and reduced vibration**

HSS ROAD range

Size	Load Index & Speed Symbol	Star Rating	Type	Rim	Unit	Tire Dimensions		
						Tread Depth	Section Width	Overall Diameter
14.00R24 (385/95R24)	170F	/	TT	10.00 W	in.	29/32	15.7	54.2
					mm	23	399	1376
14.00R25 (385/95R25)	170F	/	TL	9.50/1.7 CR 10.00/1.5	in.	29/32	15.7	54.2
					mm	23	399	1376
16.00R25 (445/95R25)	174F	/	TL	11.00/1.7 CR 11.25/2.0	in.	34/32	18.3	59.1
					mm	27	465	1500
20.5R25 (525/80R25)	177F	/	TL	17.00/1.7 CR 17.00/2.0	in.	37/32	20.3	59.2
					mm	30	516	1504

Size	LISS	Nominal Load (kg)	Nominal Inflation (kPa)	Nom Speed (km/h)	Speed (km/h)	Inflation (kPa)								
						200	300	400	500	600	700	800	900	
14.00R24 (385/95R24)	170F	/	TT	10.00 W	30	4690	5420	6130	6830	7500				
					40	4310	4990	5640	6280	6900				
					50	4200	4860	5500	6120	6720				
					60	4120	4770	5400	6010	6600				
					70	3940	4550	5150	5730	6300				
					80	3750	4340	4910	5460	6000				
14.00R24 (385/95R24)	170F	/	TT	10.00 W	30	4690	5420	6130	6830	7500				
					40	4310	4990	5640	6280	6900				
					50	4200	4860	5500	6120	6720				
					60	4120	4770	5400	6010	6600				
					70	3940	4550	5150	5730	6300				
					80	3750	4340	4910	5460	6000				
14.00R24 (385/95R24)	170F	/	TT	10.00 W	30	5230	6050	6850	7620	8375				
					40	4810	5570	6300	7010	7705				
					50	4690	5430	6140	6830	7504				
					60	4610	5330	6030	6710	7370				
					70	4400	5090	5750	6400	7035				
					80	4190	4840	5480	6100	6700				
14.00R24 (385/95R24)	170F	/	TT	10.00 W	30	3350	4640	5830	6980	8070	9130			
					40	3080	4260	5370	6420	7430	8400			
					50	3000	4150	5230	6250	7230	8180			
					60	2950	4080	5130	6130	7100	8030			
					70	2820	3890	4900	5860	6780	7670			
					80	2680	3710	4670	5580	6450	7300			